

THE FLORIDA STATE UNIVERSITY COLLEGE OF INFORMATION

# The HOB0 Project

---

Downloading the Data Off the HOB0 Devices

# Table of Contents

---

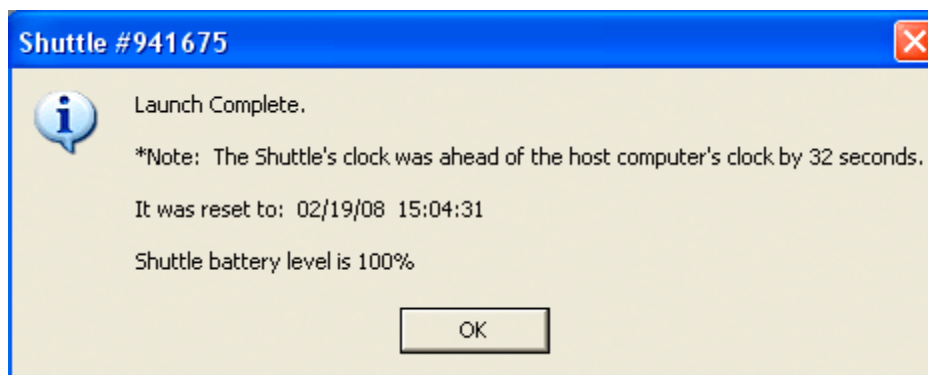
Preparing the HOBO Shuttle .....	3
Downloading the Data from the HOBO Shuttle .....	4
Exporting the Data to Excel.....	6
Appendix A – HOBO Device Locations .....	9

## Preparing the HOBO Shuttle

1. Obtain the HOBO shuttle and the data transfer cable from Pam's lower right desk drawer – both are in the case together.
2. Take the HOBO shuttle device to a HOBO device location. (See Appendix A for a map of the locations). This can be done in any order.
3. Plug one end of the cable into the HOBO shuttle and connect the other end into the HOBO device. Once they are connected, the shuttle will flash orange for off loading.
4. Once the data transfer is completed, the device will flash green next to "successful" for a successful transfer. Remove the transfer cable from the HOBO device.
5. **Repeat steps 3 and 4** for each device until you have transferred all the data from all **six** devices. Once all of the data is on the shuttle, go to the back workroom computer with the BoxCar Pro software
6. Once on the computer, go to My Computer and go to the **K:\** network drive. From there go to the HOBO data folder. In this folder, open the folder for the current year.
7. Inside the current year folder, create a new month folder based on the current month. Name the folder using this scheme: Month # - Month Name Year. For example: **01 – January 2008**.
8. With the folder created, connect the long cable coming from the computer into the HOBO shuttle. The cable can be found on the ledge under the computer desk.
9. On the desktop, there should be an icon **for BoxCar Pro 4.3**. Open the BoxCar software.

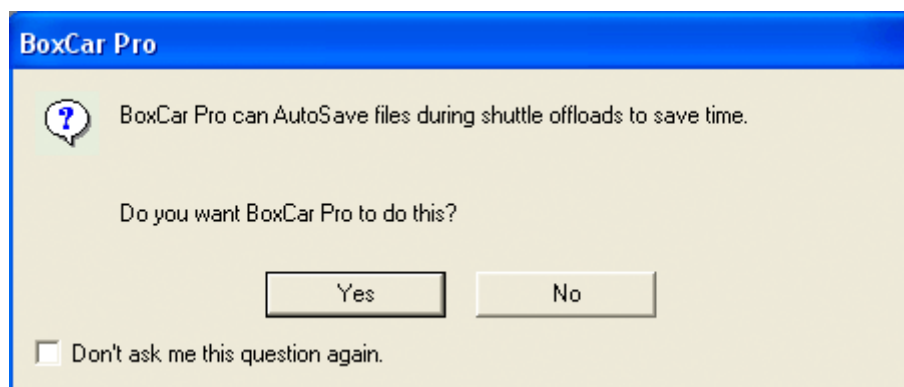
## Downloading the Data from the HOBO Shuttle

1. Now in BoxCar Pro, on the menu, click **Logger** → **Launch**. This will ready the HOBO shuttle for downloading.
2. When the launch is complete, it will pop up a message saying Launch complete (Figure 1). It may also say something regarding the time being off, which can be ignored. Click **OK** to continue.



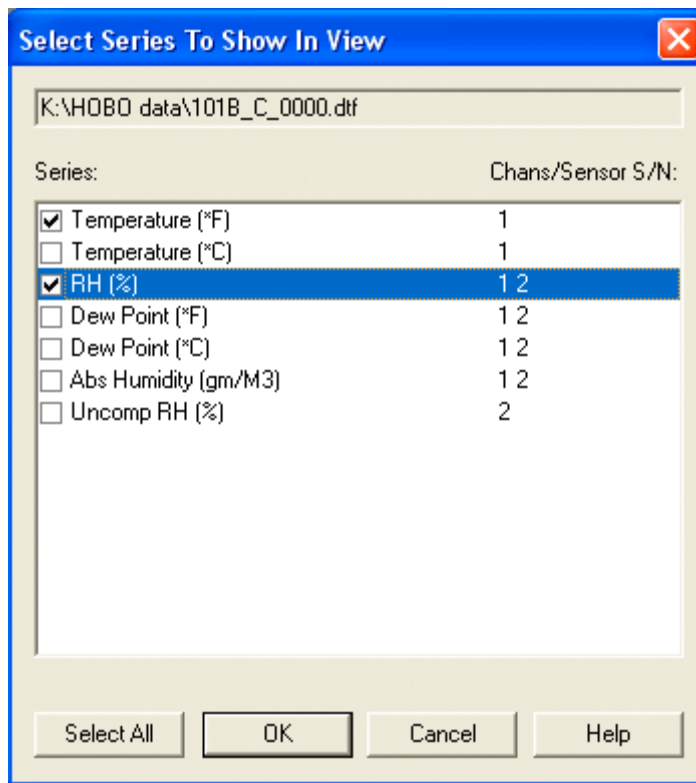
**Figure 1** - Launch complete message, and example of time off message.

3. Next, select **Logger** → **Readout**. This will download the data from the HOBO device.
4. While it is downloading the data, BoxCar will automatically save the downloaded data files to **K:\Hobo Data** in BoxCar Pro's in .dtf file format. As such, a pop up window **may** appear regarding Autosave (Figure 2). If the window does come up, check off the **Don't ask me this question again** box and then click **Yes ALL**. The window should now no longer pop up in the future.



**Figure 2** – Screenshot of the autosave message.

- Now a new window will pop up called **Select Series To Show in View**. For this check off **JUST Temperature (°F) and RH (%)** (Figure 3). Click OK to proceed.

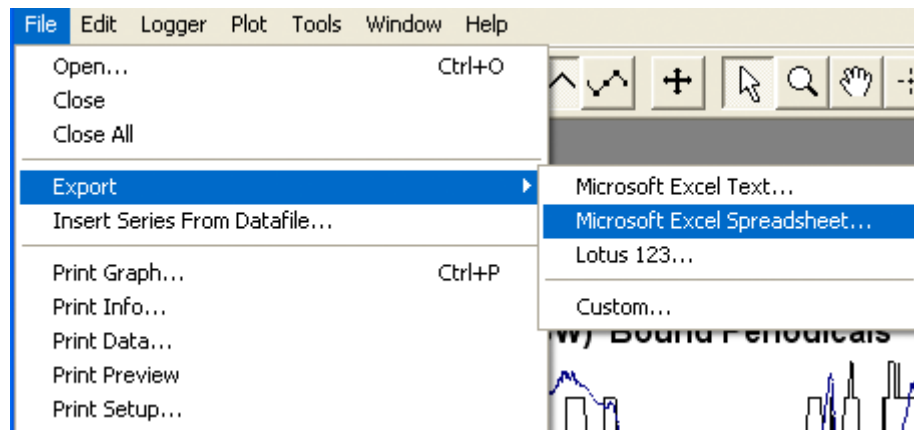


**Figure 3** – Screenshot of Select Series to Show In View. Your selections should look exactly as above.

- This window will pop up for each device, so **repeat step 5** for the remaining devices. As you go through them, in the text box above of the selection choices, you can see where the file is being saved to and which device it is currently on.
- Once all downloads are completed, it should say Launch Completed. Click OK to continue.

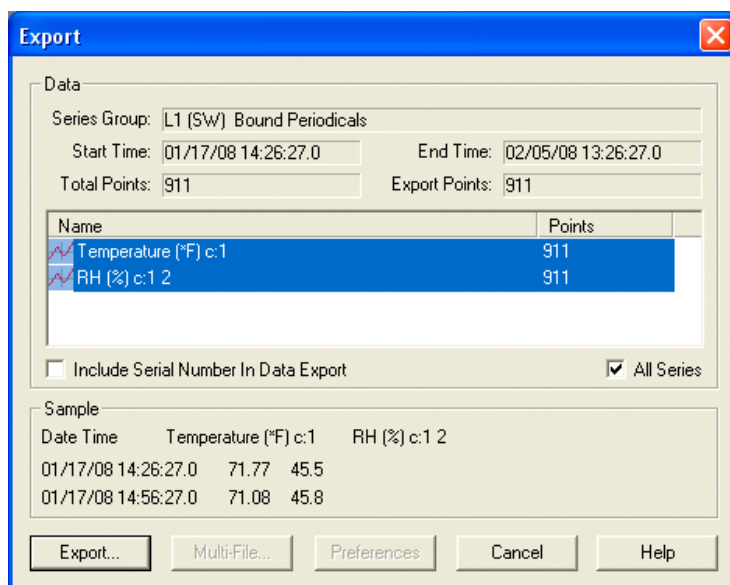
## Exporting the Data to Excel

1. Now you should have a window with a graph for each of the six devices. Select the window labeled **L1 – Current Periodicals**.
2. With that window selected, go to **File → Export → Microsoft Excel Spreadsheet** (Figure 4).



**Figure 4** – Screenshot of the menu choices for exporting. Your selections should look exactly as above.

3. A new screen will come up called Export. It will show information about the Series group, the Start time and the number of points. In the selection field, make sure **Temperature** and **RH** are highlighted. Make sure **All Series** is checked. Leave “include serial number” **unchecked**. Click “Export” to continue (Figure 5).



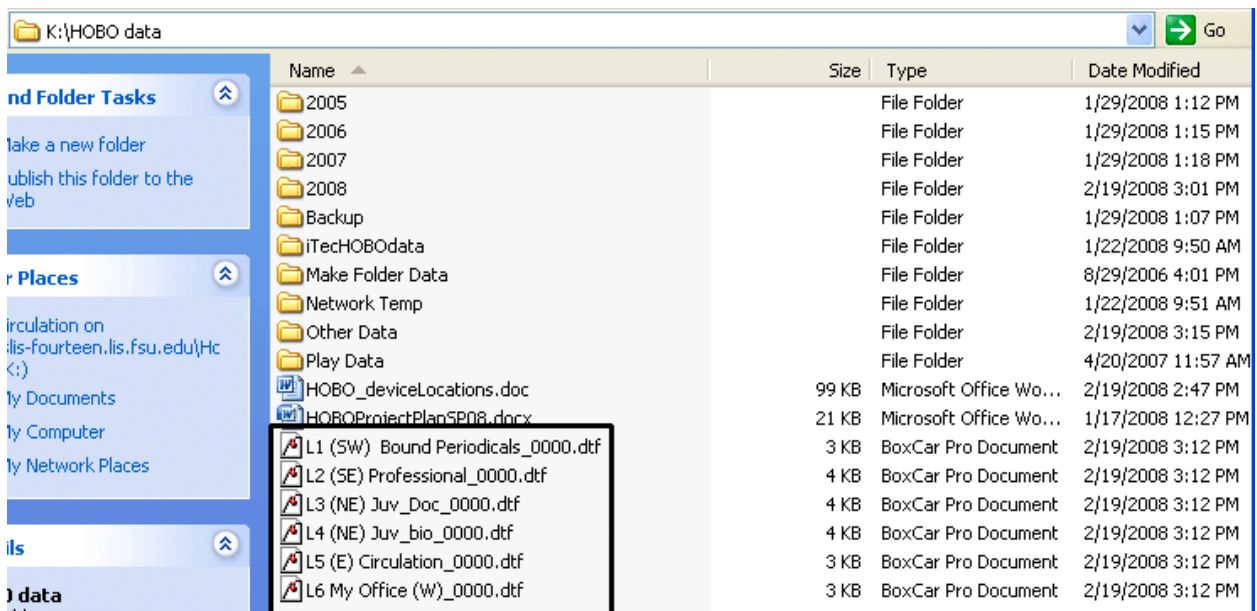
**Figure 5** – Screenshot of the Export window. Your selections **MUST** look exactly as above. (The data will be different for each device and download)

It will then open a save window. Go to the new folder you just created. So go to K:\HOBO Data\Year\Month. Once you are in that folder, leave the file name as it is and leave it as an .xls. Click Save. It will say “writing devices information” so wait until it is complete and the export window disappears. When that is complete, close the L1 graph in BoxCar.

4. Now, select the **L2 – SE** window and **repeat steps 2 through 4**. Do the same thing for L3 and the remainder of the devices. If for some reason a device **does not** have any data, it will not let you export an excel spreadsheet. If this is the case, simply close out that device’s graph window and move on to the next device.
5. Now that all of the spreadsheets are saved, check to see if they are in the new folder you created. There should be six spreadsheets, one for each device (assuming all devices had data). Once you have confirmed there are six files, close BoxCar Pro. Disconnect the HOBO Shuttle from the computer and return it to Pam’s Office.

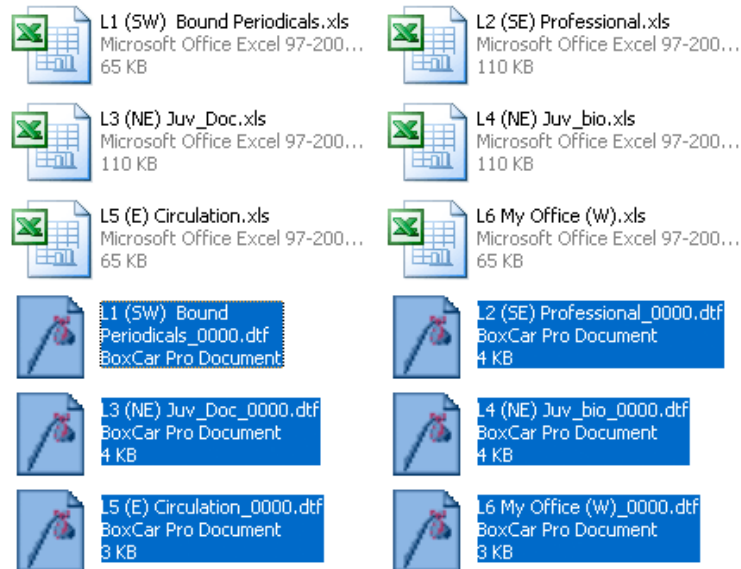
**Note:** Next month, when you download the data from the devices to the Shuttle, it will overwrite the previous month’s data on the Shuttle. The data still remains on the HOBO Shuttle until an offloading HOBO device writes over it. So, if you need the data again in the case of an emergency, the data remains on the Shuttle until next month.

6. Next, we have to move the files that were autosaved by BoxCar. Go to **K:\Hobo Data** and in the main folder, there should be **six .dtf** files, one for each device. Highlight these, cut them, and then paste them into the current month folder you created (Figure 6).



**Figure 6** – Screenshot of the HOBO Data Folder. BoxCar autosaves and places the .dtf files here. You should see the six files in the black box above every time after you download the data.

7. Now in the current month folder you created, there should be **twelve** files (assuming that all devices had data). There should be six .dtf files and six spreadsheet files (Figure 7).



**Figure 7** – Screenshot of the current month folder. Your folder should look like this (unless a device did not have any data).

8. You are **DONE** with the data downloading procedures.

9. Appendix A – HOBO Device Locations

