

THE FLORIDA STATE UNIVERSITY COLLEGE OF INFORMATION

The HOB0 Project

Changing a HOB0 Device's Settings

If for some reason you need to change a HOBO Device’s description (name) or interval (how often it downloads), you will need to do the following:

Note: Changing any of the settings, including changing the description or interval length, will **CLEAR** the data off the device. If you need to make changes to a device, try and wait until you download the data for the month. This way there will be no data on the device when you change the settings.

1. First, obtain HOBO device you want to change the settings for. Take the device to the back workroom computer.
2. Connect the long cable coming from the computer into the HOBO device. The cable can be found on the ledge under the computer desk.
3. Open up BoxCar Pro 4.3. At the top, click **Logger** → **Launch** (This **does not** yet clear the data).
4. It will start connecting and then the Launch window will come up (Figure 1). This window displays key information for this HOBO Device, such as description and interval. It will also display the battery level and the current readings of the device.

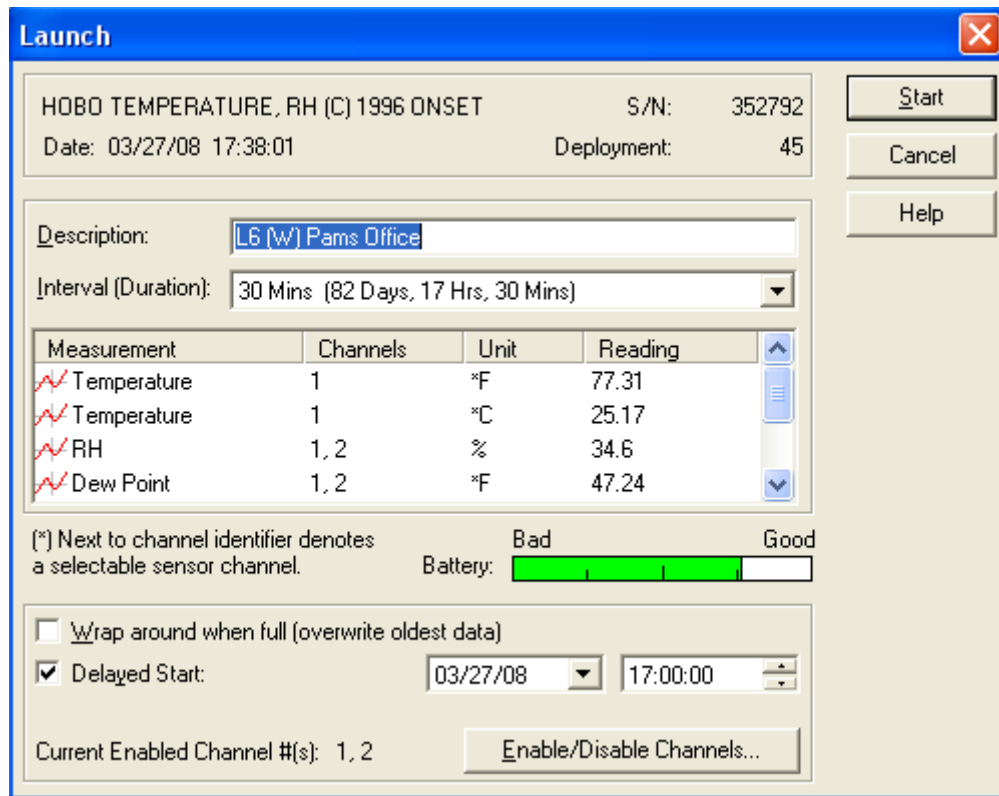


Figure 1 – The HOBO Device Launch Window

5. To change the description (name) of the HOBO device simply type the new name in the Description text box (Figure 1). To change the Interval, click the arrow on the drop-down list and

choose the duration you want. For the durations, the numbers in parentheses indicate how many days, hours and minutes the device can collect data for if you chose that interval. For example, the devices are currently set to 30 minutes. This means that each device can record data points every 30 minutes for 82 days, 17 hours and 30 minutes before the device becomes full.

6. Once you have made the necessary changes to the device, you have to set the Delayed Start. (this will make it so the device waits till a certain time before it starts collecting data). First, make sure that **Delayed Start** is checked on.
7. For the date, click the little arrow to bring up a calendar. Choose today’s date from the calendar.
8. For the time, first look up at the top to see the current time (right below where it says HOBO Temperature). For the time text box, either use the arrow buttons to move it up or down, or type in the new time yourself. Set the time to a few minutes ahead. For example, if it was 17:53:35 (5:53 P.M) for the current time, change the Delayed Start time to 17:55:00 (5:55 P.M). This will cause the device to stop collecting data until 17:55:00. Once, 17:55:00 comes, it will start collecting data again.
9. Once you have made all the necessary changes, click the **Start** button on the top right. When you click Start, a message will come up saying that Launching the device will **erase** the data currently on the device (Figure 2). Click Yes to continue (clicking next will officially **ERASE** the data!)

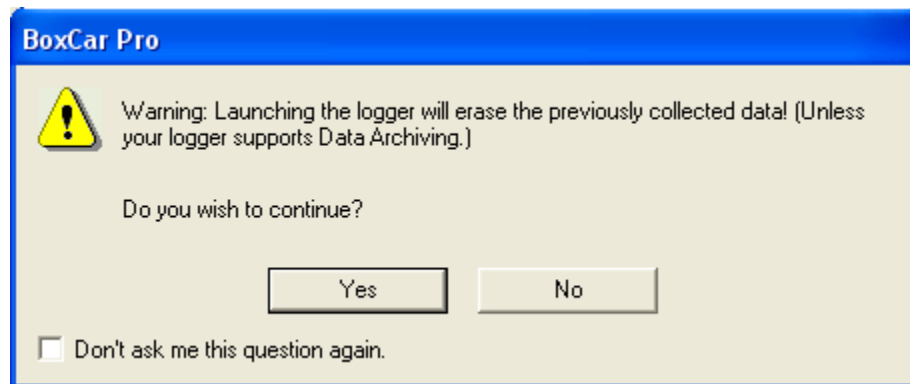


Figure 2 – The message warning you that continuing will **ERASE** the data off the device.

10. It will then begin to launch. When its done launching, a message will pop up about properly disconnecting the device. Go ahead and disconnect the cable from the HOBO device and then click **OK**.
11. Close BoxCar Pro and then return the device to its location.
12. You are **DONE** with this procedure.